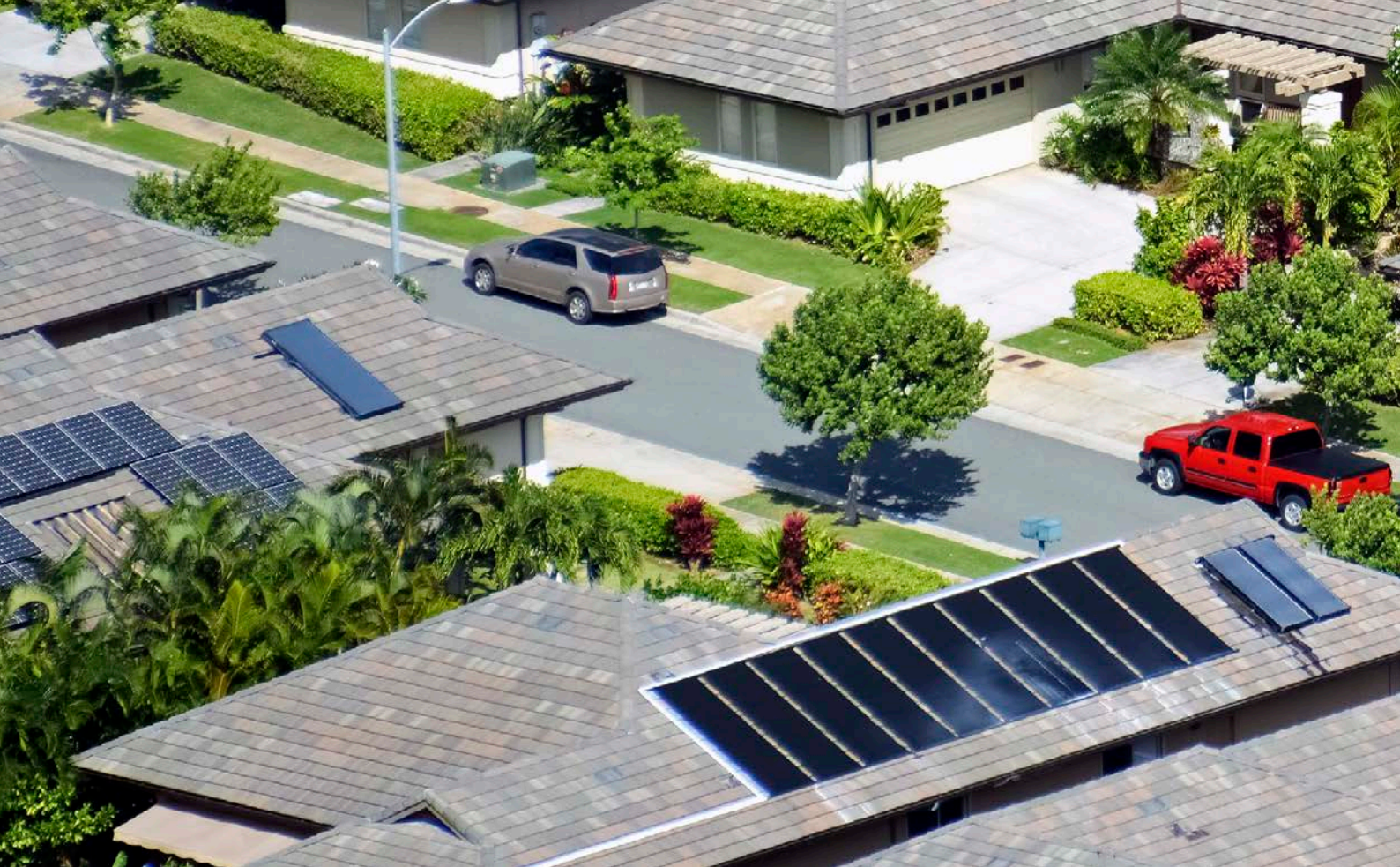


YOU HAVE THE POWER



2023 CATALOGUE



Suzhou Johnray Solar Energy Co. Ltd. is a high-tech and innovation company in solar photovoltaic industry. We provide comprehensive solutions for residential, commercial and industrial uses.

Our design and production focus on energy storage batteries, solar inverters, smart terminals, and monitoring equipments. In addition, we have international distribute channels and customer service centers which we are increasing.

Quality products, satisfactory service and competitive prices are our good reputations. We welcome you to join us for a bright future with full of intelligent, clean, economical and sustainable energy.



BEST QUALITY

High technology and constant innovation.



OEM/ODM

Design and customization department.



GLOBAL NETWORK

International service and warehouses.



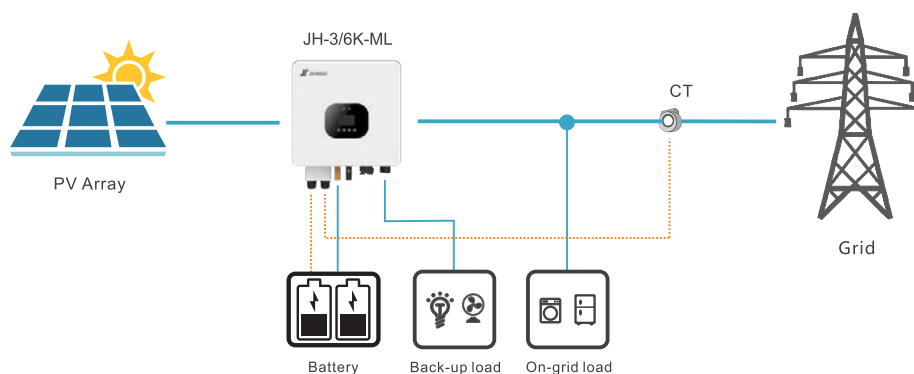
DIRECT ATTENTION

24-hour sales and after-sales service.

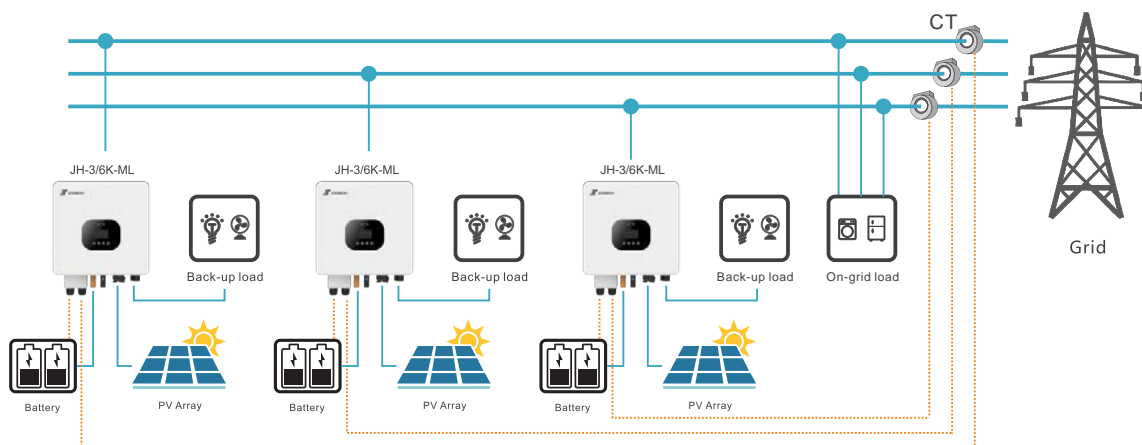
Residential storage solutions

Our storage solutions are suitable for domestic use in both single-phase and three-phase systems. The efficient use of solar energy results in less dependent on the electricity grid for lower electricity bills.

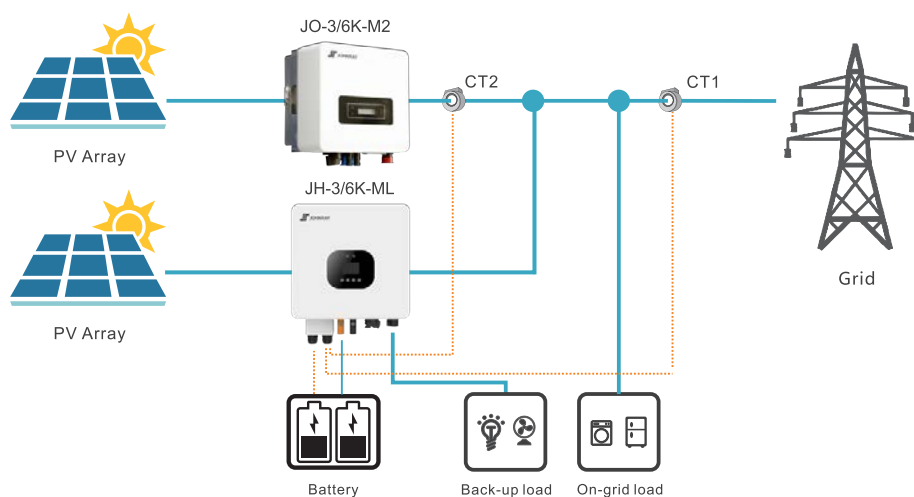
1. Single phase hybrid inverter basic application



2. Single phase hybrid inverter in three phase system



3. Extend the capacity of existing inverter system



JRGHV-7.5-20

Stackable LiFePO4 Battery

7.5kWh / 10kWh / 12.5kWh / 15kWh / 17.5kWh / 20kWh



LFP (LiFePO4) high safety chemistry



Stackable installation for more energy



Battery Management System



Plug and play



Wide range of voltage and energy options



Long life cycle

JRGHV-7.5-20 Stackable LiFePO4 Battery

- LFP (LiFePO4) chemistry.
- Residential and commercial application.
- Stackable installation.
- Flexible voltage and energy configurations.



Technical Data	JRGHV-7.5	JRGHV-10	JRGHV-12.5	JRGHV-15	JRGHV-17.5	JRGHV-20
Nominal Energy:	7.48 kWh	9.98 kWh	12.48 kWh	14.97 kWh	17.47 kWh	19.96 kWh
Nominal Voltage:	144 V	192 V	240 V	288 V	336 V	384 V
Nominal Capacity:	52 Ah					
Modules:	3 + PDU	4 + PDU	5 + PDU	6 + PDU	7 + PDU	8 + PDU
Connection:	1P45S	1P60S	1P75S	1P90S	1P105S	1P120S
Operating Voltage Range:	114.7~159.7 V	153~213 V	191.2~266.2 V	230~319 V	267.7~372.7 V	306~426 V
Max. Charge/Discharge Current:	35/35 A					
Charge/Discharge Temperature:	0~55°C / -20~55°C					
Ingress Protection Rating:	IP65					
Cooling Method:	Natural Cooling					
Recommended DOD:	90%					
Cycle Life:	>6000 Cycles (90% DOD / 25°C / 0.5C)					
Communication:	CAN / RS485					
Certifications:	CE, IEC, IEC62619, UN38.3					
Dimensions (WxHxD):	606x (730 / 900 / 1070 / 1240 / 1410 / 1580) x220 mm					
Weight:	80 kg	105 kg	129 kg	152.3 kg	176.2 kg	199.5 kg



CJT Park, No. 60, Chuangye Street, High-tech Zone, 2
15011 Suzhou, Jiangsu, China
+86 (0) 512 65100899
info@johnrayenergy.com

📍 China 📍 Thailand 📍 Spain

www.johnrayenergy.com

